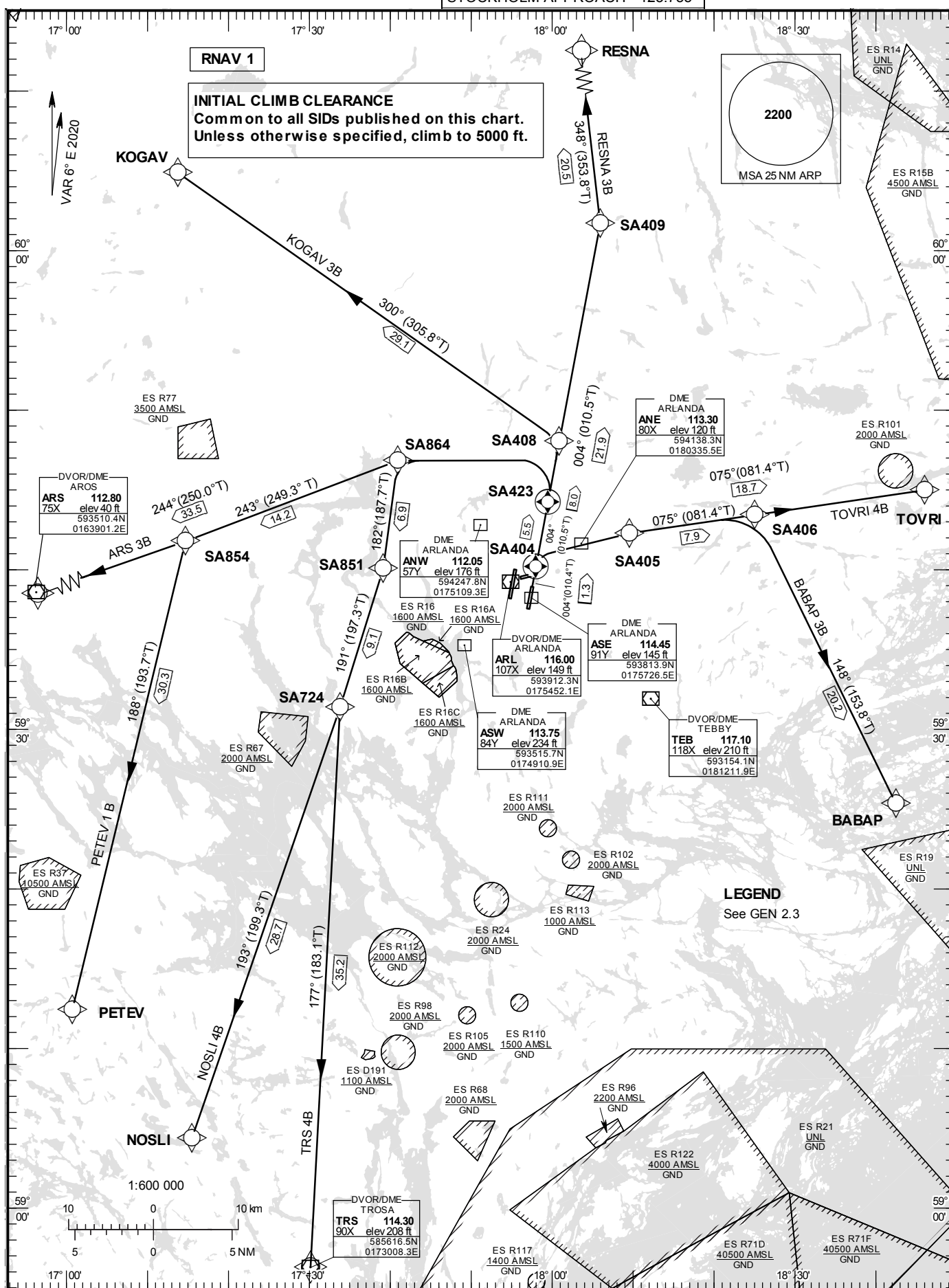


RNAV(DME/DME or GNSS)  
SID RWY 01R

HGT and ALT in ft  
BRG are MAG (True)  
**TA 5000 ft AMSL**

ARLANDA TOWER	125.130
ARLANDA ATIS DEP	121.630
STOCKHOLM APPROACH	123.755



LFV

STOCKHOLM/Arlanda

Prescribed Coding of RNAV SID for RWY 01R

Notes:

INITIAL CLIMB CLEARANCE: Climb to 5000 ft unless otherwise specified. Common to all SIDs published on charts.

Aircraft proceeding on RNAV SID shall use 400 ft/NM (6.6%) as a minimum gradient of climb up to 5000 ft AMSL.  
Aircraft unable to conform with this procedure shall inform ATC accordingly.

Aircraft from STOCKHOLM/Arlanda shall not be operated at an airspeed of more than 250 kt IAS below FL 100 unless otherwise instructed.

Contact Frequency: Contact STOCKHOLM DEPARTURE, when so instructed by TWR, on channel indicated below.

ARS 3B

Path Term	Waypoint Identifier	Fly-over	Course °M(°T)	Dist (NM)	Turn Dir	Rest Alts (ft AMSL)	Speed Limits (kt)	VPA/ RDH (°/ft)	Rec Navaid	Navigation Specification
CF	SA423	Y	004°(010.5°)	5.5	-	+2500	-	-	ARL	RNAV 1
DF	SA864	-	-	-	L	-	-	-	-	RNAV 1
TF	ARS	-	244°(250.0°)	33.5	-	-	-	-	-	RNAV 1

SID instruction:

Climb on track 004° to SA423 (MIN 2500 ft before turn, MIN 7.2% climb gradient) – SA864 – ARS

124.105 MHz

ACFT unable to follow RNAV SID:

Report "unable RNAV SID due to RNAV type" to Clearance Delivery and "unable RNAV SID" to Stockholm Departure at first contact.  
Climb on track 004° to ASE DME 6.1 (MIN 2500 ft before turn, MIN 7.2% climb gradient).  
Turn Left to track 264°. Expect radar vectors to ARS.

BABAP 3B

Path Term	Waypoint Identifier	Fly-over	Course °M(°T)	Dist (NM)	Turn Dir	Rest Alts (ft AMSL)	Speed Limits (kt)	VPA/ RDH (°/ft)	Rec Navaid	Navigation Specification
CF	SA404	Y	004°(010.4°)	1.3	-	+600	-	-	ARL	RNAV 1
DF	SA405	-	-	-	R	+1500	-210	-	-	RNAV 1
TF	SA406	-	075°(081.4°)	7.9	-	-	-	-	-	RNAV 1
TF	BABAP	-	148°(153.8°)	20.2	R	-	-	-	-	RNAV 1

SID instruction:

Climb on track 004° to SA404 (MIN 600 ft before turn) – SA405 (MAX 210 kt IAS until SA405) – SA406 – BABAP

130.330 MHz

ACFT unable to follow RNAV SID:

Report "unable RNAV SID due to RNAV type" to Clearance Delivery and "unable RNAV SID" to Stockholm Departure at first contact.  
Climb on track 004° to ASE DME 2.0 (MIN 600 ft before turn). Turn right to track 074° (MAX 210 kt IAS until established inbound on track 074°). Expect radar vectors to BABAP.

**STOCKHOLM/Arlanda****KOGAV 3B**

Path Term	Waypoint Identifier	Fly-over	Course °M(°T)	Dist (NM)	Turn Dir	Rest Alts (ft AMSL)	Speed Limits (kt)	VPA/ RDH (°/ft)	Rec Navaid	Navigation Specification
CF	SA404	Y	004°(010.4°)	1.3	-	+600	-	-	ARL	RNAV 1
TF	SA408	-	004°(010.5°)	8.0	-	-	-	-	-	RNAV 1
TF	KOGAV	-	300°(305.8°)	29.1	L	-	-	-	-	RNAV 1

SID instruction: Climb on track 004° to SA404 – SA408 – KOGAV

**124.105 MHz**

ACFT unable to follow RNAV SID: Report "unable RNAV SID due RNAV type" to Clearance Delivery and "unable RNAV SID" to Stockholm Departure at first contact.  
Climb on track 004°. Expect radar vectors to KOGAV.

**NOSLI 4B**

Path Term	Waypoint Identifier	Fly-over	Course °M(°T)	Dist (NM)	Turn Dir	Rest Alts (ft AMSL)	Speed Limits (kt)	VPA/ RDH (°/ft)	Rec Navaid	Navigation Specification
CF	SA423	Y	004°(010.5°)	5.5	-	+2500	-	-	ARL	RNAV 1
DF	SA864	-	-	-	L	-	-	-	-	RNAV 1
TF	SA851	-	182°(187.7°)	6.9	L	-	-	-	-	RNAV 1
TF	SA724	-	191°(197.3°)	9.1	-	-	-	-	-	RNAV 1
TF	NOSLI	-	193°(199.3°)	28.7	-	-	-	-	-	RNAV 1

SID instruction: Climb on track 004° to SA423 (MIN 2500 ft before turn, MIN 7.2% climb gradient) – SA864 – SA851 – SA724 - NOSLI

**124.105 MHz**

ACFT unable to follow RNAV SID: Report "unable RNAV SID due RNAV type" to Clearance Delivery and "unable RNAV SID" to Stockholm Departure at first contact.  
Climb on track 004° to ASE DME 6.1 (MIN 2500 ft before turn, MIN 7.2% climb gradient). Turn Left to track 264°. Expect radar vectors to NOSLI.

**PETEV 1B**

Path Term	Waypoint Identifier	Fly-over	Course °M(°T)	Dist (NM)	Turn Dir	Rest Alts (ft AMSL)	Speed Limits (kt)	VPA/ RDH (°/ft)	Rec Navaid	Navigation Specification
CF	SA423	Y	004°(010.5°)	5.5	-	+2500	-	-	ARL	RNAV 1
DF	SA864	-	-	-	L	-	-	-	-	RNAV 1
TF	SA854	-	243°(249.3°)	14.2	-	-	-	-	-	RNAV 1
TF	PETEV	-	188°(193.7°)	30.3	L	-	-	-	-	RNAV 1

SID instruction: Climb on track 004° to SA423 (MIN 2500 ft before turn, MIN 7.2% climb gradient) – SA864 – SA854 – PETEV

**124.105 MHz**

ACFT unable to follow RNAV SID: Report "unable RNAV SID due RNAV type" to Clearance Delivery and "unable RNAV SID" to Stockholm Departure at first contact.  
Climb on track 004° to ASE DME 6.1 (MIN 2500 ft before turn, MIN 7.2% climb gradient). Turn Left to track 264°. Expect radar vectors to PETEV.

**STOCKHOLM/Arlanda****RESNA 3B**

Path Term	Waypoint Identifier	Fly-over	Course °M(°T)	Dist (NM)	Turn Dir	Rest Alts (ft AMSL)	Speed Limits (kt)	Rec Navaid	Navigation Specification
CF	SA404	Y	004°(010.4°)	1.3	-	+600	-	ARL	RNAV 1
TF	SA409	-	004°(010.5°)	21.9	-	-	-	-	RNAV 1
TF	RESNA	-	348°(353.8°)	20.5	-	-	-	-	RNAV 1

SID instruction: Climb on track 004° to SA404 – SA409 – RESNA**124.105 MHz**

ACFT unable to follow RNAV SID: Report "unable RNAV SID due to RNAV type" to Clearance Delivery and "unable RNAV SID" to Stockholm Departure at first contact.  
Climb on track 004°. Expect radar vectors to RESNA.

**TOVRI 4B**

Path Term	Waypoint Identifier	Fly-over	Course °M(°T)	Dist (NM)	Turn Dir	Rest Alts (ft AMSL)	Speed Limits (kt)	Rec Navaid	Navigation Specification
CF	SA404	Y	004°(010.4°)	1.3	-	+600	-	ARL	RNAV 1
DF	SA405	-	-	-	R	+1500	-210	-	RNAV 1
TF	TOVRI	-	075°(081.4°)	18.7	-	-	-	-	RNAV 1

SID instruction: Climb on track 004° to SA404 (MIN 600 ft before turn) – SA405 (MAX 210 kt IAS until SA405) – TOVRI**130.330 MHz**

ACFT unable to follow RNAV SID: Report "unable RNAV SID due to RNAV type" to Clearance Delivery and "unable RNAV SID" to Stockholm Departure at first contact.  
Climb on track 004° to ASE DME 2.0 (MIN 600 ft before turn). Turn right to track 074° (MAX 210 kt IAS until established inbound on track 074°). Expect radar vectors to TOVRI.

**TRS 4B**

Path Term	Waypoint Identifier	Fly-over	Course °M(°T)	Dist (NM)	Turn Dir	Rest Alts (ft AMSL)	Speed Limits (kt)	Rec Navaid	Navigation Specification
CF	SA423	Y	004°(010.5°)	5.5	-	+2500	-	ARL	RNAV 1
DF	SA864	-	-	-	L	-	-	-	RNAV 1
TF	SA851	-	182°(187.7°)	6.9	L	-	-	-	RNAV 1
TF	SA724	-	191°(197.3°)	9.1	-	-	-	-	RNAV 1
TF	TRS	-	177°(183.1°)	35.2	-	-	-	-	RNAV 1

SID instruction: Climb on track 004° to SA423 (MIN 2500 ft before turn, MIN 7.2% climb gradient) – SA864 – SA851 – SA724 – TRS**124.105 MHz**

ACFT unable to follow RNAV SID: Report "unable RNAV SID due to RNAV type" to Clearance Delivery and "unable RNAV SID" to Stockholm Departure at first contact.  
Climb on track 004° to ASE DME 6.1 (MIN 2500 ft before turn, MIN 7.2% climb gradient). Turn Left to track 264°. Expect radar vectors to TRS.